

# AAC-1000

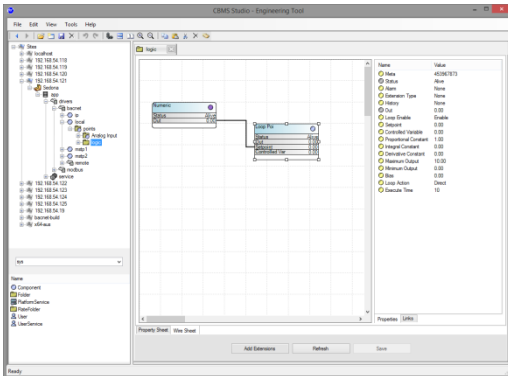
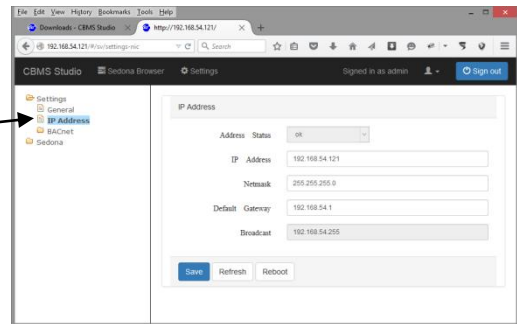
## Quick Start



Step 1. Connect to the AAC-1030 using a web browser. The default IP address for the AAC-1030 is 192.168.1.100. The default username is admin and the password is blank

Step 2. Change the IP address from the settings page.

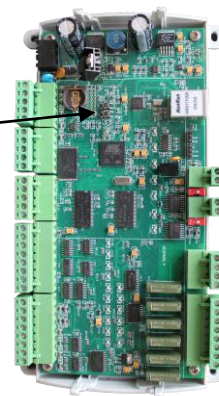
A reboot of the AAC-1030 is required after a change is made to the IP address.



If the AAC-1000 is to be used as a gateway, then Install the Engineering Tool from <http://www.cbmsstudio.com/downloads.html>

Note : The Engineering Tool is required only when the device is intended to be used as a gateway.

To restore the AAC-1030 back to its factory settings, press and hold pin S1 for 5 seconds.



## How to

The following how to pages are available on the web site at <http://www.cbmsstudio.com/how-to.html>

- How do I use the BACnet Explorer ?
- How do I configure a BACnet IP to MSTP Router ?
- How do I configure a Modbus to BACnet Gateway ?
- How do I configure an OPC to BACnet Gateway ?

